

wellington
square



April 15, 2018

Disagreeing, Without Drawing Blood

"I therefore, the prisoner in the Lord, beg you to lead a life worthy of the calling to which you have been called, with all humility and gentleness, with patience, bearing with one another in love, making every effort to maintain the unity of the Spirit in the bond of peace."

- Ephesians 4: 1-3 (NRSV)

"But speaking the truth in love, we must grow up in every way into him who is the head, into Christ,..."

- Ephesians 4: 15 (NRSV)

"So then, putting away falsehood, let all of us speak the truth to our neighbors, for we are members of one another. Be angry but do not sin; do not let the sun go down on your anger, and do not make room for the devil."

- Ephesians 4:25-27 (NRSV)

welcome!

We're glad you're here today. We're a group of people learning what it means to be followers of Jesus. This is a place where **everyone is welcome, nobody's perfect, and** anything is possible. We welcome and encourage you to share your life with us as we journey in faith together.

What can you expect on a Sunday morning? Our worship services aim to be about 70 minutes long, with a mix of praise singing & prayer, and a time of inspiration and learning through the teaching that explores scripture, and issues of everyday life.

We believe that by working together, sharing our faith and our lives, we can accomplish much more than we could individually. **With God's help and the power of** the Holy Spirit, we believe we can transform our community and our world as the hands and feet of Jesus on earth.

If you're ready for us to get to know you, please fill out a "Welcome" card from the pew and bring it to the Connection Point in the foyer after the service. We hope you too will find a place of belonging here, and share your life and faith journey with us.

happenings

New to our church? We would like to get to know you. We invite you to fill out a Welcome Card which is in the pews. Please leave it in the box marked Connect/Reconnect at the exits at the front and back of the sanctuary.

Staff Notes | Rev. Katie Southon will be away from April 7th - 21st. Rev. Orville James is available during this time for any pastoral needs.

Fellowship Lunch | Please join us today, April 15th, after the 11am service. Tickets are \$10 each and can be purchased at the door.

New Members | Have you been around Wellington Square for a while now and feeling comfortable enough to **belong? We'd love you to** officially join this congregation on Sunday, June 10th. Please let us know by contacting the church office at (905)634-1849 or office@wsquare.ca

PROPERTY — SPRING CLEAN UP — MAY 12
Please come join the property team on Saturday morning May 12 (9-12) to give the church grounds a little attention. Come for an hour or come for the morning. We need people to help with edging, mulching, fertilizing, tree cutting, pruning, and planting. Equipment needed includes edgers, shovels, wheel barrels, and utility trailers. Our property is often the first thing newcomers see when they visit us. Maintaining our church property is an important way to demonstrate that we also care about the people and activities that take place inside our building. For more information, please contact Alvin Kiers at property@wsquare.ca if you can give your time or lend your equipment. Coffee/snacks provided.

happenings cont.

Observer Magazine | Please note that the cost of the Observer subscription is \$25 per year. If you wish to renew your subscription or start a new one, you can pay for it by using a blue pew envelope and writing Observer on the envelope with your contact information by today, Sunday April 15th.

Spring Cleaning Challenge! Do you have unwanted, costume or broken jewellery at **home and don't know what to do with it?** Consider donating it to our Friday Night Community. We are looking for donations of beads of any kind (glass, wood, paper or plastic), pins/brooches, amulets, broken chains, single or mismatched earrings for our Ladies Spring Brunch. There will be a basket in the church office or pass them along to Iona or Lisa. We will be collecting donations through April. More questions? Text Iona @ 289-208-6048.

Photo Directory | is now available after both the 9 and 11 a.m. services at the Connection Point and also in the office during the week. Cost:\$3.

Nut-Free Scent-Free | Please note that at Wellington Square we do our best to be a nut-free and scent-free safe space for everyone. Thank you for your contributions to this effort.

BETTER TOGETHER | Meet the ministers Sunday April 22nd. Spiritual journeys go best when shared with others. If you are beginning your spiritual quest at Wellington Square, Reverends Katie & Orville would like to meet you. Please drop by the Chapel after the 9am or 11am service on Sun. Apr. 22nd.



The Butterfly and the Violin
By Kristy Cambron

Manhattan art dealer Sera James watches her world crumble at the altar two years ago, and her heart is still fragile. Her desire for distraction reignites a passion for a mysterious portrait she first saw as a young girl—a painting of a young violinist with piercing blue eyes.

In her search for the painting, Sera crosses paths with William Hanover—the grandson of a wealthy California real estate mogul—who may be the key to uncovering the hidden masterpiece. Together Sera and William slowly unravel the story behind the painting subject, Austrian violinist Adele Von Bron.

She is the darling of the Austrian aristocracy of 1942, talented violinist, and daughter to a high-ranking member of the Third Reich. Adele risks everything when she begins smuggling Jews out of Vienna. In a heartbeat, her life of prosperity and privilege dissolves into a world of starvation and barbed wire.



GraceLand - a place full of God's grace...where children learn the love of Jesus and how to shine His light everyday. Sundays at 9am for Nur to Gr. 6

Participant Forms are required every year for children and youth to ensure safety for all. Thank you for supporting our Plan 2 Protect procedures.

April Themes:

- Praise God for Easter!
- Friendship (3 part lesson series)
- How to read the Bible



Summer kids camp week is August 27-30th for SK to Gr. 5. Registration forms are available in the office and online.



Preliminary Confirmation Meeting

Sun Apr 15 (Today!) - 10:30-11:15am

After the 9am Service today prospective Confirmands and their families will be gathering in the Youth Room with Adam to go over details of the upcoming Confirmation session.

Preliminary details are found below this post:

Rockpile: Faith Study: Forgiveness (Gr 7-8)

Wed Apr 18 - 7:30-9:00pm

Come on out to the youth room this Wednesday for another edition of Rockpile where we will be diving into the subject of Forgiveness! Why is it so important to forgive? And what does **forgiveness even really mean?? We'll be diving into** this important topic and as always there will be snacks!

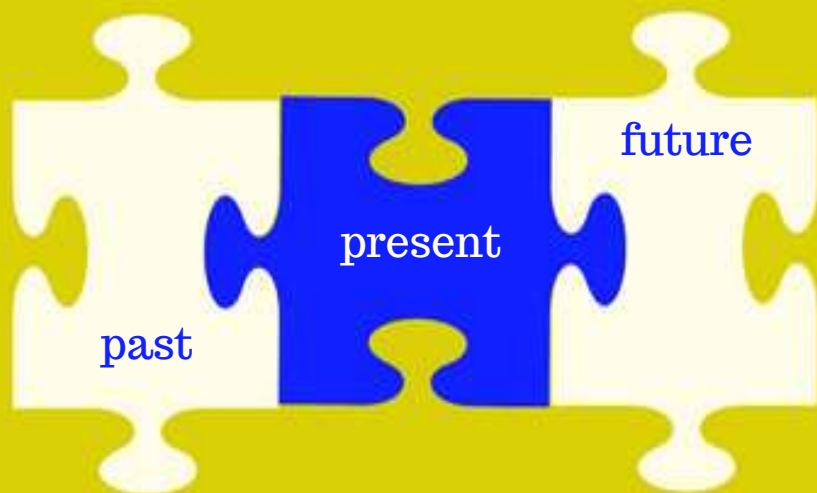
CONFIRMATION: MAY 2018

Apr 15, May 1, May 15, May 29, Jun 3

Confirmation Session dates are here! This series is open to any youth who a) Participated in this **past fall's Youth Alpha program**, and b) **Have not** yet been confirmed and would like to be.

Confirmation is a chance for Youth to transition into being an active member of the Church and more importantly the chance to make the personal choice to follow Jesus.

Confirmation involves attending 3 classes which run at the church from 7-9pm, on 3 Tuesday nights in May as well as the Sunday morning Confirmation Service. The dates for the classes are: May 1st, May 15th, May 29th. The Sunday morning Confirmation service that Adam and the confirmands will put together takes place at 10am on June 3rd in the sanctuary. If you or your youth are wishing to be part know that there is no cost but please do register by e-mailing Adam at acresswell@wsquare.ca



“All the Pieces of the Puzzle”

AN ANNIVERSARY
SUNDAY
CELEBRATION

AT WELLINGTON SQUARE

Please join us on Sunday morning, May 6th during
and after both services as we celebrate all that
God has done in the past and present at WSUC
and look to the future!

Wellington Square United Church

&

*Southern Ontario
Lyric Opera*

Invite you to an afternoon of operatic
arias & sacred music

April 15th, at 2:00pm

Featuring:

Two talented soloists and
Members of the SOLO chorus,
accompanied by
Maestro Sabatino Vacca

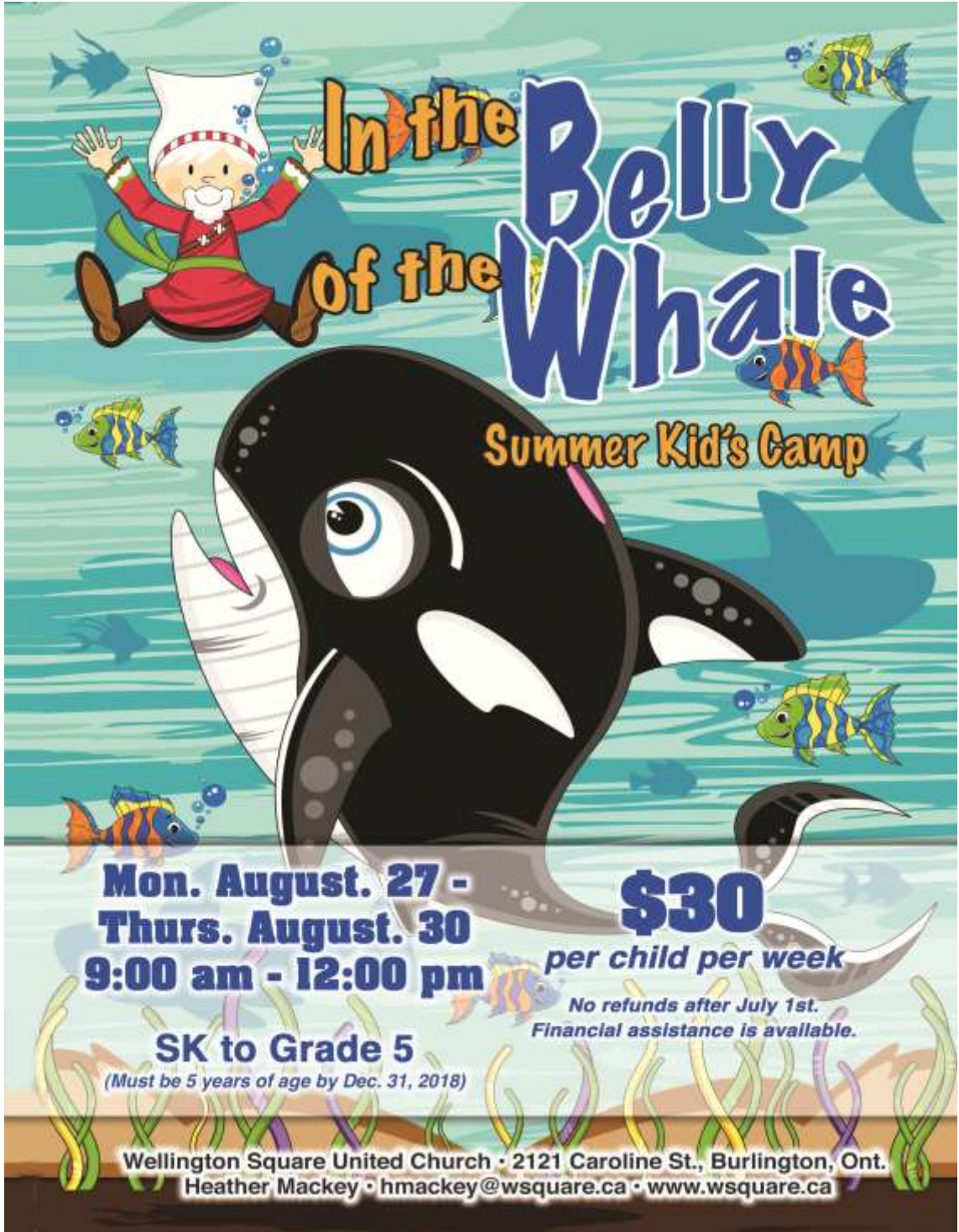
Tickets \$30

Available after all weekend services, or by
calling

The church office (905) 634-1849

or Juanita Maldonado

(289) 440-1623



In the Belly of the Whale

Summer Kid's Camp

**Mon. August. 27 -
Thurs. August. 30
9:00 am - 12:00 pm**

\$30

per child per week

*No refunds after July 1st.
Financial assistance is available.*

SK to Grade 5

(Must be 5 years of age by Dec. 31, 2018)

Wellington Square United Church • 2121 Caroline St., Burlington, Ont.
Heather Mackey • hmackey@wsquare.ca • www.wsquare.ca



"For where two or three come together in my name, there I am with them."

Matthew 18:20

Vision | to have every person in a healthy small group.

Mission | To live out the GREAT COMMANDMENT (Matt. 22: 37-39) and the GREAT COMMISSION (Matt. 28: 19-20).

Men's Breakfast | the next Saturday Men's Breakfast will be April 21, 9am-10:30am at **Gary's place**. Sign up at the Connection Point or contact Gary Brown at gbrown@wsquare.ca

JESUS CALLING devotional available at the Connection Point \$11

JOYFUL SPIRITS: Our next gathering will be Thursday April 19th at 7pm in the Pritchard Rm. We will be viewing the PASSION TALK SERIES by **LOUIE GIGLIO... "HOW GREAT IS OUR GOD"**. Contact: jmagwood@wsquare.ca

THANK YOU to the flower team for magnifying and glorifying GOD through their work in decorating the sanctuary with the beautiful Easter flowers! It is so very appreciated!

WORSHIP NIGHT: Experience Classic Worship Songs by the writers Paul Baloche & Brian Doerksen (Come Now Is The Time To **Worship, Above All, Refiner's Fire, Micah Six Eight & Many More!**) WHEN: Friday, April 27th, 2018 TIME: 7-10pm WHERE: Oakville - Harvest Bible Chapel. For tickets & more information go to UNITEDPRODUCTIONS.COM

I AM A CHURCH MEMBER - Rick Warren from **Saddleback Church** says **"It is impossible to grow to spiritual maturity by yourself. You must be connected to other parts of the Body. This wonderful little book explains the power of belonging to a church family."** For those who are looking forward to taking the step of being received as a Wellington member, we invite you to join us for discussion of the book on Sunday May 27th in the chapel at 10:30am. Please sign up at the CONNECTION TABLE or contact joymagwood@gmail.com. Cost of book \$10.

Discipleship Café - Thank you to all our team who helped make the March 24 Discipleship Café so successful & to all the attendees who made it so vibrant. We PRAISE GOD for His blessings! Our next DISCIPLESHIP CAFÉ will be Saturday, October 27, 2018, so please reserve the date on your calendar.

Small Group Book Study: Brian McLaren, The Great Spiritual Migration We are starting a six-week study of this important book about the future direction of the Christian faith. Study will **be hosted at Rob and Lisa Irish's on Wednesdays** starting April 11th. We meet for dinner and community at 6:30, study together from 7:30 to **9:00. If you're interested, let us know** rirish@wsquare.ca



Friday Community

As part of the Healthy Kids Community Challenge, we received funding through the City of Burlington to educate and model how to 'Power off and Play'. This initiative teaches about healthy recommended screen limits and gives children and families suggestions to play and engage together outside of technology. We are thrilled to use this funding to bring in an art teacher for the next 3 months to teach structured art/craft projects to the children. We are thankful for the ongoing enthusiasm, love and care that our amazing and dedicated adult and youth leaders provide as they share relationships with our younger friends.

In preparation for our upcoming Ladies' Brunch

at the end of April we are collecting unwanted, costume or broken jewelry. We are looking for donations of beads of any kind (glass, wood, paper or plastic), pins/brooches, amulets, broken chain, single or mismatched earrings. Please drop any donations off in the church office or bring along on Friday.

Blessings of goodness:

*donations of 500 snacks which fill 50 snack bags to give out each week

Most Needed Items:

*yogurt and black take out containers

***snacks for children's lunch bags**

*salad bar toppings & dressings

*gently used/newer running shoes

*electric beaters, sandwich maker

*Queen mattresses & headboard, lamps, bedside tables, sewing machine/material, wall decorations for new family to country

*wool for knitting in Hub

For information contact: fnc@wsquare.ca



reaching out

Reaching Out – Spring Flower Sale

Many of you have been asking about the annual Spring Flower sales. In addition to bulbs and seeds, there will also be the opportunity to order *plants*.

There are some changes from last year. Instead of picking up the flowers at the Church on Mother's Day, as we have in the past, you will need to arrange to pick up the flowers at **Dee Glover's home on Wednesday May 9th**. The address is on the order form. There will be no extra flowers ordered this year.

As usual, the flowers are of excellent quality and competitively priced. All profits will go to help fund our Reaching Out projects.

Order forms are available in the church office and will be at the Connection Point table today. There is also a printable version of the order form available on the church website under Outreach. Deadline for submitting orders is Wednesday, April 25th.

If you have any questions, please contact Dee at kdeeglover@bell.net. He is also looking for volunteers to help unload the truck and sort orders when they arrive on the morning of May 9th.



Bulbs and Seeds: order forms due TODAY!

Prayer of Saint Francis

Lord, make me an instrument of your peace.
Where there is hatred, let me bring love.
Where there is offense, let me bring pardon.
Where there is discord, let me bring union.
Where there is error, let me bring truth.
Where there is doubt, let me bring faith.
Where there is despair, let me bring hope.
Where there is darkness, let me bring your light.
Where there is sadness, let me bring joy.
O Master, let me not seek as much
to be consoled as to console,
to be understood as to understand,
to be loved as to love,
for it is in giving that one receives,
it is in self-forgetting that one finds,
it is in pardoning that one is pardoned,
it is in dying that one is raised to eternal life.

wellington square united church

905-634-1849

office@wsquare.ca www.wsquare.ca

2121 Caroline St, Burlington ON L7R 1L7

Office Hours: Mon to Wed 9am-3pm,
Thurs 10am-3pm, Fri 10am-2pm



Ministerial Team

Rev. Dr. Orville James (ext. 19)

ojames@wsquare.ca

Rev. Katie Southon (ext. 14)

ksouthon@wsquare.ca

Rev. Tom Chire (*Voluntary*)

Children/Family Ministry (GraceLand)

Heather Mackey (ext. 21)

hmackey@wsquare.ca

Youth Ministry

Adam Cresswell (ext. 11)

acresswell@wsquare.ca

Adult Faith Ministry

Joy Magwood (ext. 23)

jmagwood@wsquare.ca

Music Ministry at 9am

Tim Watson (ext. 10)

twatson@wsquare.ca

Music Ministry at 11am

Juanita Maldonado (ext. 20)

jmaldonado@wsquare.ca

Friday Night Community Coordinator

Lisa Lunski (ext. 0) *llunski@wsquare.ca*

Outreach Missions Coordinator

Karen Guyatt (ext. 0) *kguyatt@wsquare.ca*

Finance

Karen Dobson (ext. 16) in Tuesdays

treasurer@wsquare.ca

Administration

Catherine Wagg (ext. 15)

cwagg@wsquare.ca

Jennifer Erbiceanu (ext.10) *office@wsquare.ca*

Custodian Team

Terry Beck

Raul Gutierrez